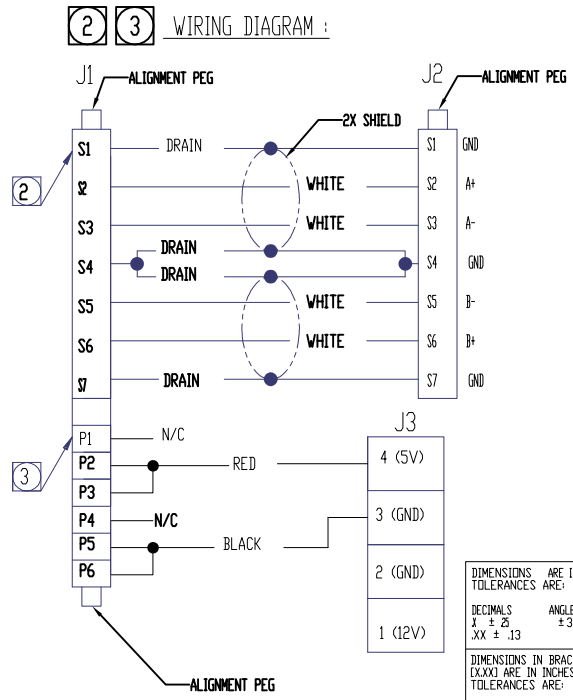
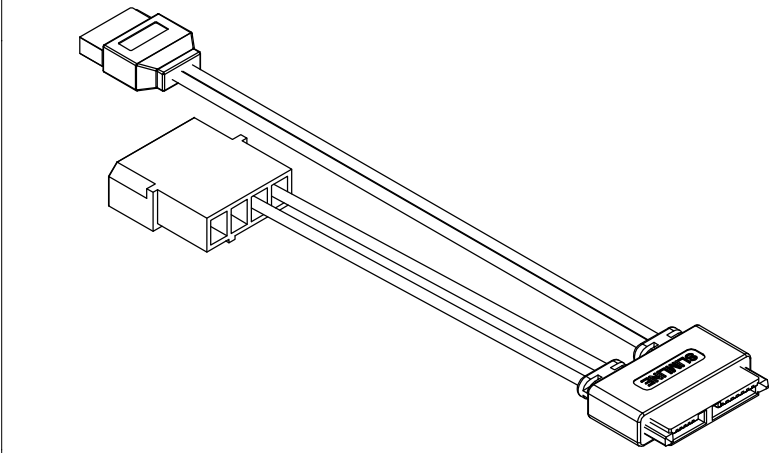
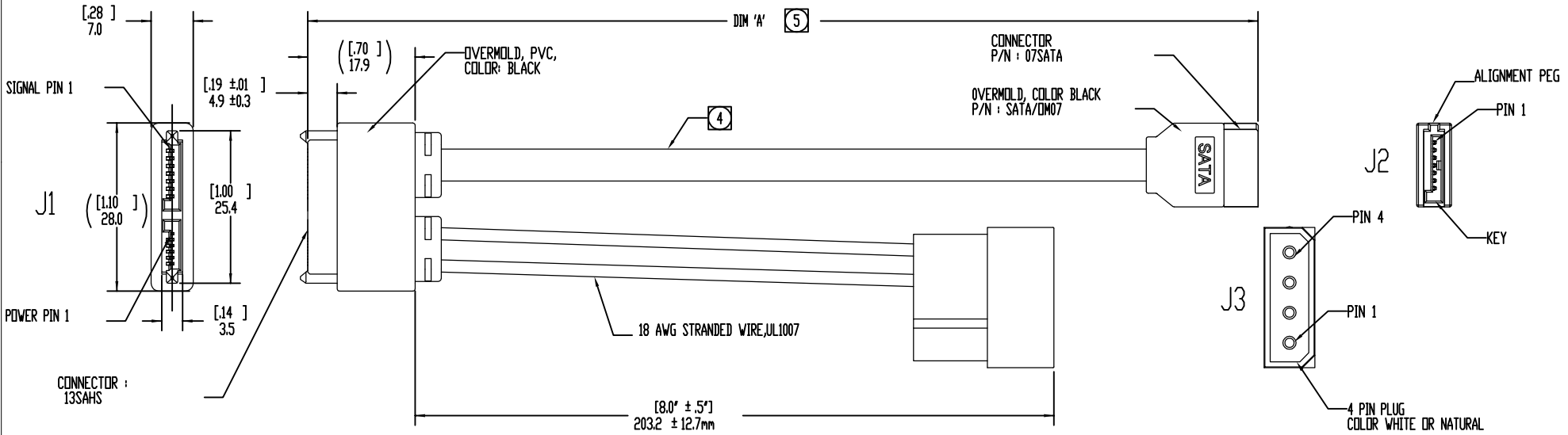


REVISIONS			
LTR	DESCRIPTION	DATE	APPROVED



ORDERING NOMENCLATURE :
CS709089 - X.XM

5 LENGTH : _____
(DIM 'A' IN METERS)
0.5M = 0.5M ± .025M
1.0M = 1.0M ± .05M
CONSULT FACTORY FOR OTHER LENGTHS

4 USE SERIAL ATA COMPLIANT CABLE, COLOR: RED, 26 AWG, APPROVED SOURCES :
HITACHI CABLE MANCHESTER
SPACE SHUTTLE
OR APPROVED EQUIVALENT

3 REFER TO POWER WIRING DIAGRAM.

2 REFER TO SIGNAL WIRING DIAGRAM.

1. MEETS THE REQUIREMENTS OF DIRECTIVE 2002/95/EC OF THE EUROPEAN PARLIAMENT AND OF THE COUNCIL OF 27 JANUARY 2003 ON THE RESTRICTION OF THE USE OF CERTAIN HAZARDOUS SUBSTANCES IN ELECTRICAL AND ELECTRONIC EQUIPMENT (ROHS).

NOTES : UNLESS OTHERWISE SPECIFIED

DIMENSIONS ARE IN MM TOLERANCES ARE: DECIMALS ANGLES X ± .25 ± 3° .XX ± .13	APPROVALS	DATE	Cpu Stuff sales@cpustuff.com 949-713-9070	
	DRAWN	06-24-08	CABLE ASSEMBLY - SATA SERIES CA-T13SAHS/07SATA/04PIN-XX.X *ROHS COMPLIANT*	
DIMENSIONS IN BRACKET (X.XX) ARE IN INCHES TOLERANCES ARE: DECIMALS ANGLES XX ± .010 ± 3° XXX ± .005	CHECKED	06-24-08	SIZE	CODE IDENT NO.
	DD NDT SCALE DRAWING		C	CS709089
			DRAWING NO.	REV.
			A	A
			SCALE: 2:1	SHEET 1 OF 1