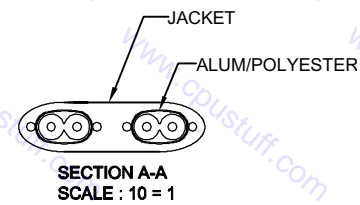
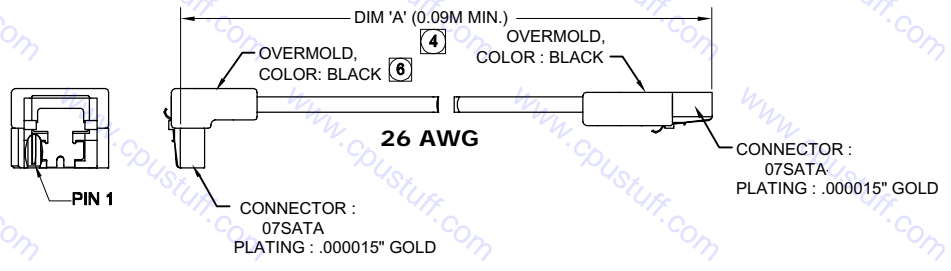
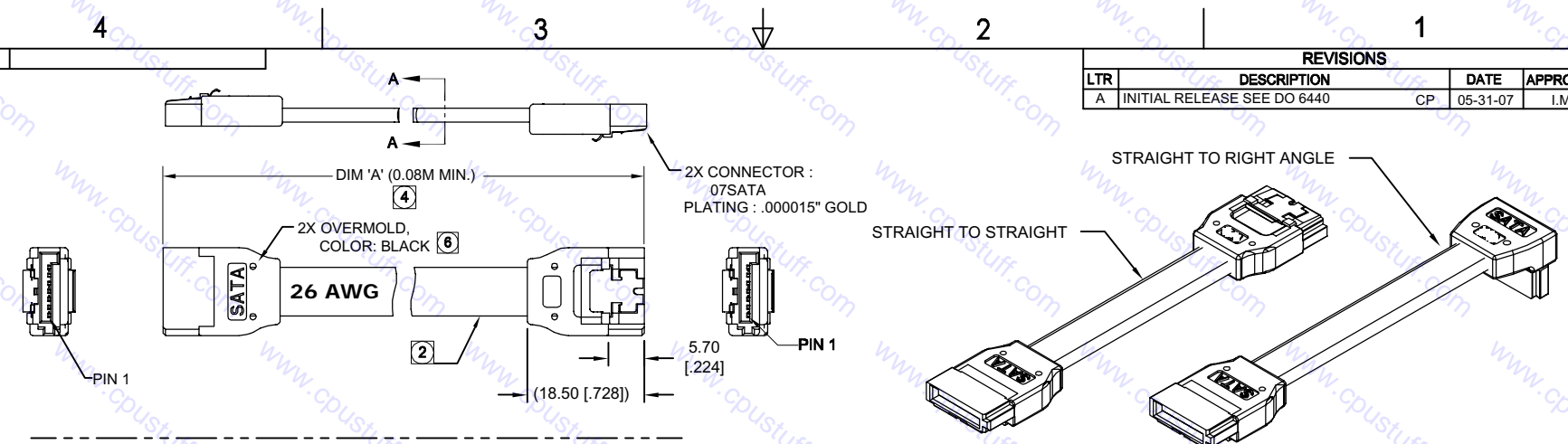
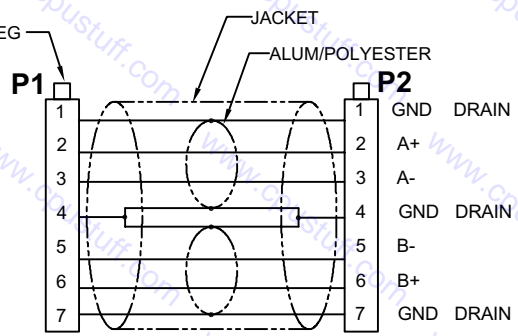


PART NO. _____

REVISIONS			
LTR	DESCRIPTION	DATE	APPROVED
A	INITIAL RELEASE SEE DO 6440	CP 05-31-07	I.M.



WIRING DIAGRAM :



⑥ OVERMOLD COLOR (SEE ORDERING NOMENCLATURE)

⑤ CONSULT WITH CA FACTORY FOR OTHER CONTACT PLATING, CABLE COLORS, OR CABLE LENGTHS.

④ TOLERANCE OF CABLE LENGTH :

DIM 'A'	TOLERANCE
0.07M - 0.5M	±.025M
0.51M - 1.00M	±.05M
1.01M - 3.00M	±.08M

3. MEETS THE REQUIREMENT OF THE SERIAL ATA II STANDARD.

② RECOMMENDED SERIAL ATA CABLES:
-SPACE SHUTTLE
-DER AN,

1. MEETS THE REQUIREMENTS OF DIRECTIVE 2002/95/EC OF THE EUROPEAN PARLIAMENT AND OF THE COUNCIL OF 27 JANUARY 2003 ON THE RESTRICTION OF THE USE OF CERTAIN HAZARDOUS SUBSTANCES IN ELECTRICAL AND ELECTRONIC EQUIPMENT. (ROHS)
NOTES : UNLESS OTHERWISE SPECIFIED

DIMENSIONS ARE IN MM
TOLERANCES ARE :

DECIMALS	ANGLES
.X ±.25	±3°
.XX ±.13	

DIMENSIONS IN BRACKETS
(XXX) ARE INCHES
TOLERANCES ARE :

DECIMALS	ANGLES
.XX ±.010	±3°
.XXX ±.005	

DO NOT SCALE DRAWING

APPROVALS		DATE	www.cpustuff.com
DRAWN		5-30-07	
CHECKED		5-30-07	
CABLE ASSEMBLY - CSATAL SERIES CA-07LSATA-X.XX LOW PROFILE ROHS COMPLIANT			
SIZE	CODE IDENT NO.	DRAWING NO.	REV.
C		CSU709080	A
SCALE: 1:1		SHEET 1 OF 1	