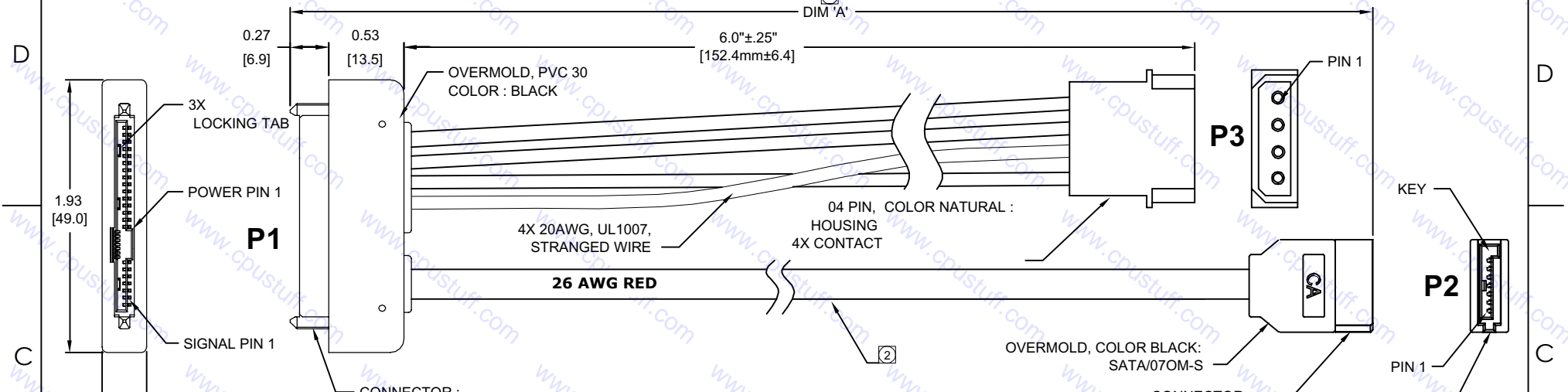
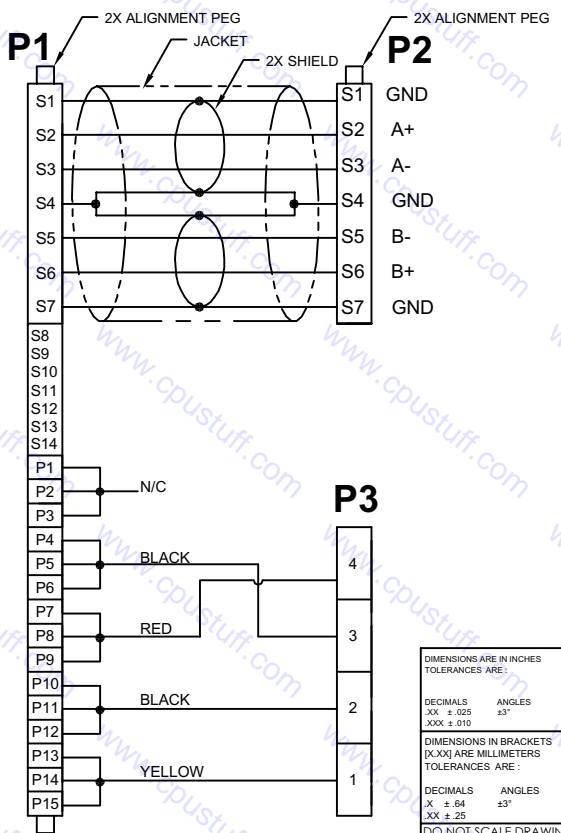


PART NO. SASLP405		REVISIONS			
LTR	DESCRIPTION	DATE	APPROVED		
A	INITIAL RELEASE SEE DO 6775	CP	11-24-08	I.M.	



WIRING DIAGRAM :



② USE SERIAL ATA COMPLIANT CABLE, 26AWG, COLOR RED, APPROVED SOURCES :

- DER AN
- SPACE SHUTTLE
- OR CA APPROVED EQUIVALENT

1. MEETS THE REQUIREMENTS OF DIRECTIVE 2002/95/EC OF THE EUROPEAN PARLIAMENT AND OF THE COUNCIL OF 27 JANUARY 2003 ON THE RESTRICTION OF THE USE OF CERTAIN HAZARDOUS SUBSTANCES IN ELECTRICAL AND ELECTRONIC EQUIPMENT. (ROHS)

NOTES : UNLESS OTHERWISE SPECIFIED

DIMENSIONS ARE IN INCHES TOLERANCES ARE :		APPROVALS	DATE	www.cpustuff.com
DECIMALS XX ± .005 XXX ± .010	ANGLES °	DRAWN	11-24-08	
DIMENSIONS IN BRACKETS [XXX] ARE MILLIMETERS TOLERANCES ARE :		CHECKED	11-24-08	CABLE ASSEMBLY - SATA SERIES
DECIMALS X ± .64 XX ± .25	ANGLES ° ± 3°			"CA-D29SAS/07SATA/4PIN- X.XM"
DO NOT SCALE DRAWING				"ROHS COMPLIANT"
SIZE C	CODE IDENT NO.	DRAWING NO.	REV.	
		CSU709101	A	
SCALE: 2:1		SHEET 1 OF 1		